



# Borders will NOT APPEAR ON PRINTED CARDS



Tips to start

Project-2010-09-29 11:54:31

(Not yet saved)

Save

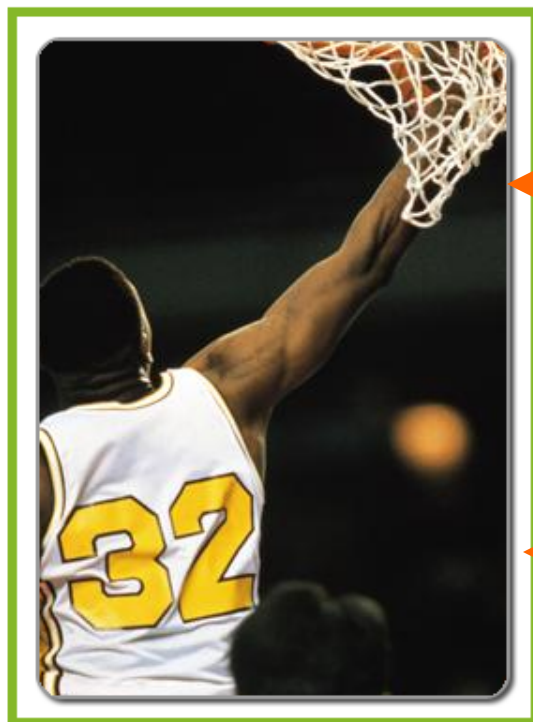
Photo Album

Save to my Photo Library »

To upload multiple images, hold down the 'CTRL' key and click on files

Upload images

or  
[get images from my photo library](#)



**Grey Border**  
For website presentation on card thickness.

**White Border**  
For production on bleeding.

Save to my Photo Library »